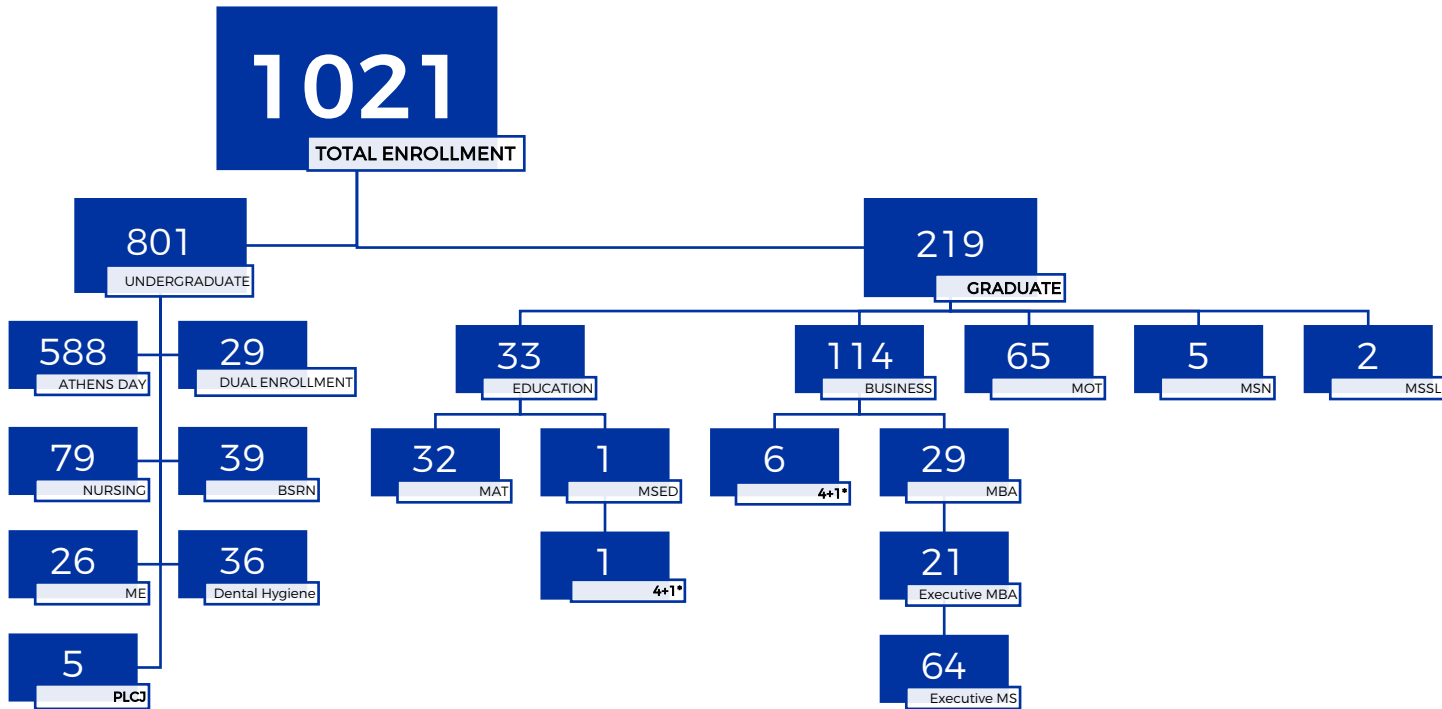


ENROLLMENT BY THE NUMBERS SPRING 2024



*Not included in total count

2023 FRESHMEN COHORT RETENTION RATE

89%

Full-Time = 149/168

2023 TRANSFER COHORT RETENTION RATE

94%



All = 126/134

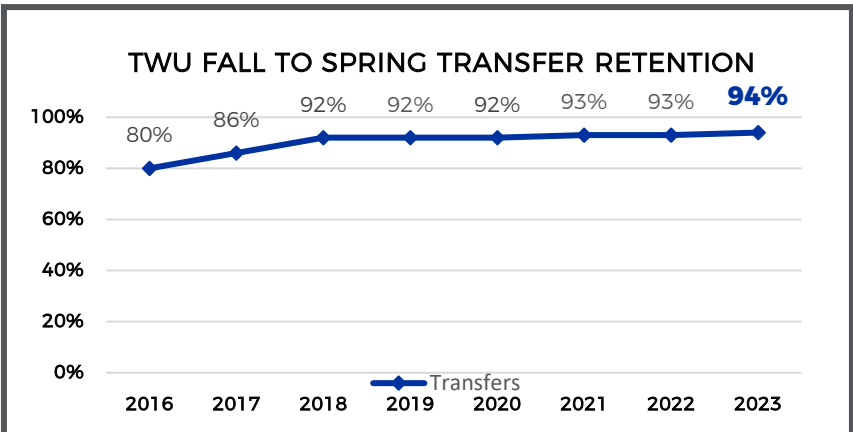
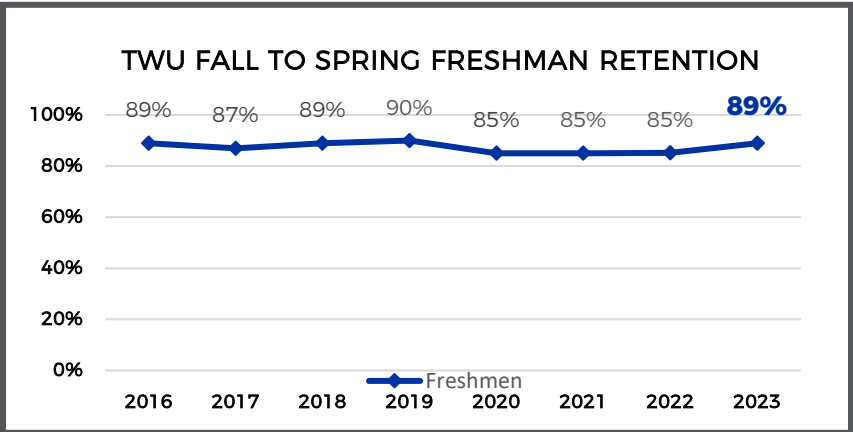
TOP MAJORS FOR UG SPRING COHORTS

1. Business
2. RN-BSN
3. Health & Human Performance
4. Criminal Justice
5. Education

2024 NEW STUDENTS




ENROLLMENT TRENDS BY PROGRAM					
	Spring 2023	Spring 2024	% Change	Budgeted	Budget Progress
UNDUPLICATED (ALL STUDENTS)	977	1021	+4.5%		
ATHENS DAY	603 (FT) 30 (PT), 191 hrs	556 (FT) 32 (PT), 232 hrs	-7.8%	578	-22
NURSING	76	79	+3.9%	76	+3
BSRN	34	39	+14.7%	35	+4
Dental Hygiene	35	36	+2.9%	35	+1
ME	38 Fall: 471 hrs Spring: 412 hrs	26 Fall: 366 hrs Spring: 294 hrs	-31.6%	1080 hrs (year)	61% towards goal
PLCJ	7	5	-28.6%	5	0
UNDUPLICATED GRADUATE (ALL)	122	219	+79.5%		
MBA	40 Fall: 243 hrs Spring: 318 hrs	29 Fall: 366 hrs Spring: 231 hrs	-27.5%	600 hrs (year)	99% towards goal
PRE-MBA	4	6	+50%		
EXECUTIVE MBA		21			
EXECUTIVE MS		64 Fall: 359 hrs Spring: 449 hrs		540 hrs (year)	150% towards goal
MAT	15 Fall: 120 hrs Spring: 128 hrs	32 Fall: 178 hrs Spring: 201 hrs	+113%	228 hrs (year)	166% towards goal
MOT	59	65	+10.2%	60	+5
MSN	8	5	-37.5%	3	+2
MSED		1 Fall: 3 hrs Spring: 3 hrs		150 hrs (year)	4% towards goal
PRE-MSED		1			
MSSL		2 Fall: n/a Spring: 24 hrs		90 hrs (year)	26% towards goal
DUAL ENROLLMENT	32 Spring: 159 hrs	29 Spring:	-9.4%		



PT UNDERGRADUATE

696

HOURS ENROLLED



ALL GRADUATE

1815

HOURS ENROLLED

